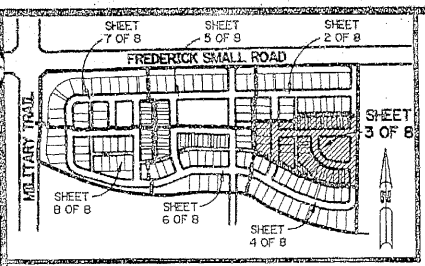


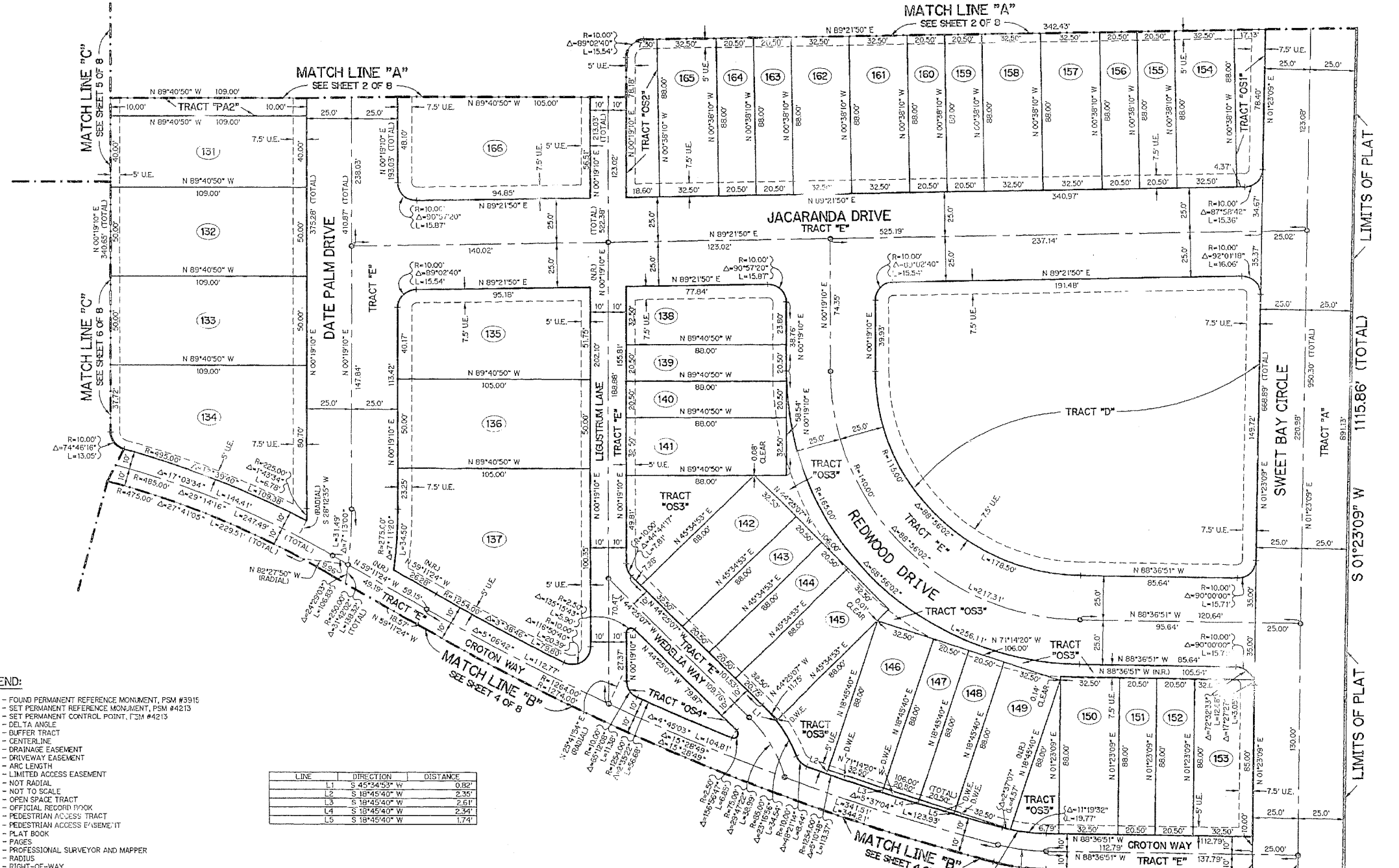
NEWHAVEN - 7A AT ABACOA

BEING A REPLAT OF ALL OF TRACT RW7A ACCORDING TO THE PLAT OF ABACOA PLAT NO. 1, AS RECORDED IN PLAT BOOK 78, PAGES 145 THROUGH 163, INCLUSIVE, OF THE PUBLIC RECORDS OF PALM BEACH COUNTY, FLORIDA, LYING IN SECTION 24, TOWNSHIP 41 SOUTH, RANGE 42 EAST. TOWN OF JUPITER, PALM BEACH COUNTY, FLORIDA

SHEET 3 OF 8 JUNE, 1997



KEY MAP
N.T.S.

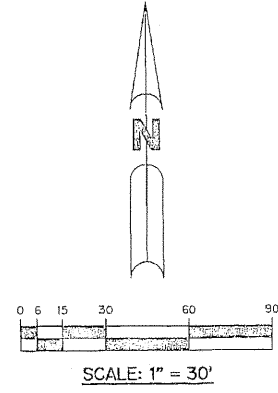


- LEGEND:**
- - FOUND PERMANENT REFERENCE MONUMENT, PSM #3915
 - - SET PERMANENT REFERENCE MONUMENT, PSM #4213
 - - SET PERMANENT CONTROL POINT, TBM #4213
 - Δ - DELTA ANGLE
 - BT - BUFFER TRACT
 - C - CENTERLINE
 - D.E. - DRAINAGE EASEMENT
 - D.W.E. - DRIVEWAY EASEMENT
 - L - ARC LENGTH
 - L.A.E. - LIMITED ACCESS EASEMENT
 - NR - NOT RADIAL
 - N.T.S. - NOT TO SCALE
 - OS - OPEN SPACE TRACT
 - O.R.B. - OFFICIAL RECORD BOOK
 - PA - PEDESTRIAN ACCESS TRACT
 - P.A.E. - PEDESTRIAN ACCESS EASEMENT
 - P.B. - PLAT BOOK
 - P.G.S. - PAGES
 - P.S.M. - PROFESSIONAL SURVEYOR AND MAPPER
 - R - RADIUS
 - R/W - RIGHT-OF-WAY
 - S.T. - SURVEY TIE
 - U.E. - UTILITY EASEMENT
 - W.E. - WALL EASEMENT
 - N 737648.0171 - DENOTES STATE PLANE COORDINATES
 - E 905258.2326

LINE	DIRECTION	DISTANCE
L1	S 45°34'53" W	0.82'
L2	S 18°45'40" W	2.35'
L3	S 18°45'40" W	2.61'
L4	S 18°45'40" W	2.94'
L5	S 18°45'40" W	1.74'

THIS INSTRUMENT PREPARED BY
PERRY C. WHITE, P.S.M. 4213, STATE OF FLORIDA
LAWSON, NOBLE AND WEBB, INC.
ENGINEERS PLANNERS SURVEYORS
420 COLUMBIA DRIVE
WEST PALM BEACH, FLORIDA

TRACT WK7
ABACOA PLAT NO. 1
(P.B. 78, PGS. 145-163)



TRACT WK7
ABACOA PLAT NO. 1
(P.B. 78, PGS. 145-163)

NOTE:

COORDINATES SHOWN ARE GRID COORDINATES
DATUM = NAD 83 (1990 ADJUSTMENT)
ZONE = FLORIDA EAST ZONE
LINEAR UNIT = U.S. SURVEY FEET
COORDINATE SYSTEM 1983 STATE PLANE
TRAVERSE MERCATOR PROJECTION
ALL DISTANCES ARE GROUND
SCALE FACTOR = 1.000077
N 89°21'50" E (PLAT BEARING)
N 89°21'52" E (GRID BEARING)
0°00'02" = BEARING ROTATION - COUNTER CLOCKWISE
(PLAT TO GRID)